

ASSIST TRACKING®



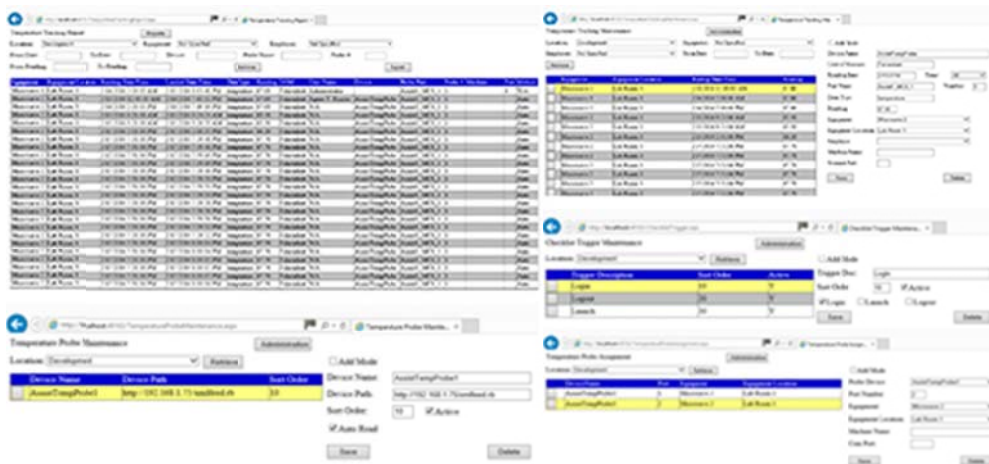
Assist Tracking
Newsletter

February 2014

WHY GAMBLE WITH PATIENT SAFETY?

Featured New Item: Temperature Tracking

Beginning in February 2014, the ability to handle the tracking of temperature related information is now included in the Assist specimen tracking application. There are many options for how to go about implementing this new functionality.



If a laboratory wants to track this information manually using existing temperature probes that are not “network enabled” then Assist can provide capture ability for this manual information. The capture can be done via the Temperature Tracking maintenance screen that has been added to the administrative web site. This would allow the laboratory to continue to use their existing paper data capture methods and then enter this information for long term storage and reporting. The Temperature Tracking report would then allow for the display of the information.

The feature can also be turned on within Assist to prompt for the manual entry of the information utilizing the temperature tracking portion of the preventative maintenance module. Using this, management can associate a “trigger” within Assist. The trigger can be the launching of Assist, the login of a user badge, or the logout of a user badge. For example, when a Microtomy technician logs into their Assist window, a screen can be generated that requires temperature readings for their water batch. Once this data is provided, the screen closes and the technician may continue work.

Continued on pg 2

Completed Updates

Temperature Tracking

Future Updates

Customer Service Phone Switch
Interaction

Customer Service Application

Chemical Storage Tracking

Preventative Maintenance

Read more on pg 4...

For labs that decide to use the automated features for temperature tracking, there are some powerful features provided. Using a network thermometer probe, Assist can automatically capture temperature data with no interaction from the technicians at all. Once configured and set up, Assist just handles everything from a background perspective.

The hardware platform that has been chosen for data capture allows for 4 temperature probes to be run from one device. There are multiple probe types available for liquids, ambient room, humidity, etc. Therefore, probes can be placed to monitor entire rooms in the lab (storage areas, computer rooms, etc.), they can be placed into water baths, or can be used for refrigerator/freezers. They can be attached wirelessly or wired on the network.

Assist can read from them in a couple of methods. A network probe can be placed on the Assist server. This unit will read through the configuration information of what probes are on the network, and will poll them using a user defined time frequency and will automatically pull all of the information. Tolerances and limits can be set so that any readings outside of a tolerance can generate email alerts to management. This probe method is very valuable for monitoring rooms and equipment that would not have direct interaction with a technician.

Individual Assist windows can also be trained to read specific probes from the devices. For example, in the Microtomy water bath scenario, individual Assist Microtomy windows can be trained to pull from information from a specific probe. The data read can be displayed on the screen as it is loaded directly to the database. The administrator can set up the frequency of the data read.

With all of the available options and choices with configuration, laboratory management should be able to solve their temperature tracking needs with Assist.

Completed Updates: Check out the latest features added to Assist Tracking

- **Web Site – Equipment Maintenance** – Added the Equipment Location drop down to the maintenance screen and removed the text field for approximate location. This will allow the lab to better specify the physical location of equipment in the facility.
- **Temperature tracking** – Created the equipment probe to read automatically the data from the Temp Alert temperature probes.
- **Web Site – Temperature Tracking Report** – Created the main report for the display of temperature information. This will display information regardless of whether the web entry, the automatic probe, or the scanner pop up capture method is used to collect information.
- **Web Site – Temperature Tracking Maintenance** – Created this screen to allow for the maintenance of temperature data. If automated probe equipment is in place, this screen will allow for changes to the automatically captured data. Data can also be entered into this screen from manual logs if necessary. If the prompts from the regular Assist scanning logs are in use, this allows for maintenance of that information.
- **Web Site – Equipment Location Maintenance** – Created this screen to allow for the maintenance of equipment locations. These are the physical locations within a facility where equipment might be located.
- **Web Site – Temperature Probe Maintenance** – Created this screen to allow for the maintenance of temperature probes. This is the table that the equipment probe automatic reading application uses to interrogate any temperature probes that exist on the network. There is a very specific file that is expected to be found at the device path.
- **Web Site – Temperature Probe Assignment** – Created this screen to allow for the maintenance of the assignment of temperature probes to equipment. For example, a specific Microtomy bath can be associated with a temperature probe so that reporting can be correct done to show the readings that were taken and the date/time at which they were taken.

While this data can be maintained using this web screen, it can also be exposed from within the actual scanning screens.

- **Web Site – Equipment Maintenance** – Modified this screen to include a flag for “Allow Temperature Tracking”. This flag allows for the categorization of equipment as to whether or not it is eligible for temperature tracking. This will cut down on the data shown in the drop down lists.
- **Scanner Engine** – Added the ability to specify the temperature probe that is associated with an individual scan station from within the station itself. While the original assignment of probes to stations would be done at the time of hardware installation, this screen allows for a change to the assignment while working.
- **Scanner Engine** – Added the ability to perform an automated thermometer capture from inside the main scanner engine of Assist. Based on the setting of configuration files and assuming that a probe assignment to a machine/com port has been performed (using the web site or the on-demand change outlined above), the engine will call out to the appropriate probe and download the temperature. It will also allow for a timer setting (in the configuration as well) to continually refresh temperature data.
- **Web Site – Check List Type Maintenance** – Modified to include a temperature flag to indicate whether or not the check list item involves temperature tracking.
- **Web Site – Check list Item Maintenance** – Modified to include the low and high reading threshold fields. Also to add the check list trigger (i.e. at login, logout, etc.) and the item prompt to show to the end user when capturing.
- **Web Site – Checklist Trigger Maintenance** – Created this screen to allow for the maintenance of checklist triggers. A checklist trigger is an event upon which a checklist can be fired from within one of the Assist modules. Examples of triggers would be Login, Logout, and software launch.
- **Warehousing** – Set capacity for cabinets and stop if too many drawers are loaded into a cabinet.
- **Warehousing** – Set up the ability to track box capacity and increment as scan transactions are completed.
- **Warehousing** – Allow for a quantity to be specified when scanning an object. If “positional” tracking is being done with the drawers, this will cause multiple positions to be occupied by the same accession number to reflect the filing and stop the end user from having to scan the same object (slides with multiple levels, for example) repetitively.
- **Web Site – Object Storage Report** – Added selection criteria for location identifier and accession prefix.
- **Queue Viewer** – Corrected logic for the situation where quantities were modified to be greater than 1, but a protocol that conflicted with this was also chosen. Now, the protocol logic will work, but the quantities (or starting cassette if from grossing add on) will be used.
- **Web Site – Product Type Maintenance** – Added a customer fulfillment type flag to allow for the filtering of product types from within the customer service module if a flag is set in the configuration to put it into place.
- **Web Site – Courier Route Stop Maintenance** – added the status flag to be able to track when a courier stop request is closed, cancelled, etc.
- **Scoreboard** – Added a special requests message board view. This allows for any special requests to be shown in a department. It also supports a special request filter where certain types of requests can be filtered so that something like “slide pulls” can be shown only in the appropriate department.

Future Updates: Check out the new features coming soon

There are many significant changes and enhancements to the various Assist modules currently underway. Some of the featured modifications currently in progress include the following:

- **Customer Service Phone Switch Interaction** – Modifications to the customer service/call tracking module to react to phone calls coming into a customer service representative phone. This allows for “screen pop” of the customer that is calling as the phone call is received.
- **Customer Service Application** – Modifications to allow for email to be generated from certain activities inside the software and also add scoreboard display for information.
- **Chemical Storage Tracking** – Additional functionality is being added to allow for the tracking and specification of detailed information regarding the chemicals that are stored in the laboratory. To begin with, this will show what chemicals are resident in the facility, but will be expanded over the coming months to include the tracking of inventory levels, MSDS paperwork, etc.
- **Preventative Maintenance** – The preventative maintenance module will be extended in the future to handle the needs of the labs.



If you have any questions or would like to schedule upgrades, please contact your Assist Tracking support team at Support@AssistTracking.com.

As always, please submit any questions or comments to the above mailbox and we will address your items as quickly as possible.