

ASSIST TRACKING®

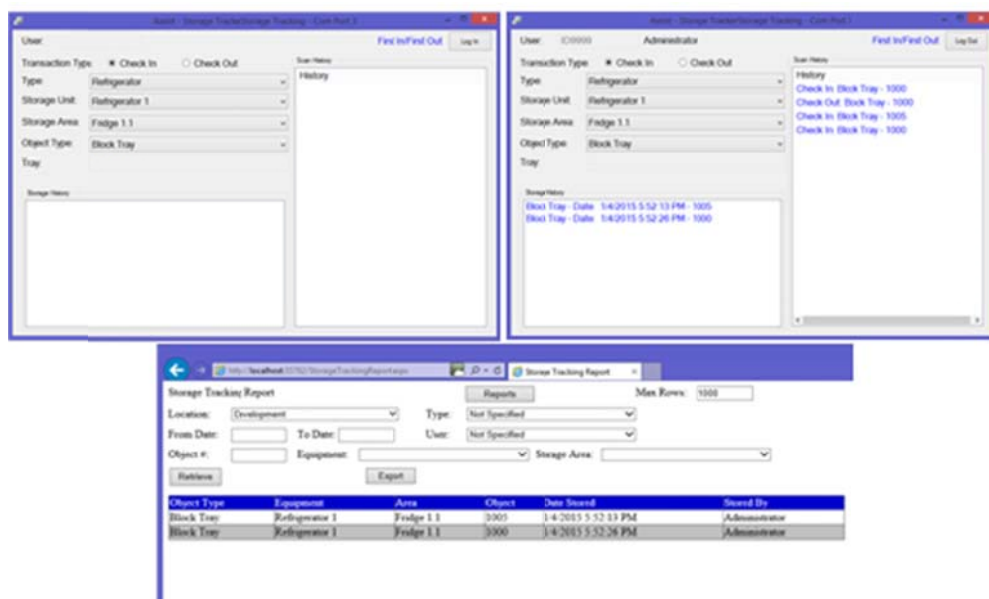
Assist Tracking
Newsletter

December 2014

WHY GAMBLE WITH PATIENT SAFETY?

Featured New Item: Storage Tracking Module

The storage tracking module of Assist has been completed and is now available as a new module to owners the Assist Tracking application. This module represents the starting point in the release of the comprehensive chemical storage and preventative maintenance module of Assist that will be included in releases through the first quarter of 2015.



The storage tracking module is designed to keep track of the location where an object is stored. It is similar to the warehouse module, but is intended to hold items that will stay in storage for a relatively brief period of time. Examples would be reagents that are stored in a chemical room, items stored in the hazardous materials closet, or tissue blocks that are stored in a refrigerator to harden.

There are existing maintenance screens in the Assist administrative web site to allow for the creation and maintenance of storage units, types, and storage areas. Items can then be scanned into these locations as they are stored. The module keeps track of who placed the item into storage and the exact moment in which it was stored.

Continued on pg 2

Completed Updates

Storage Tracking Module

Future Updates

Badge-less Assist

Chemical Storage Tracking

Preventative Maintenance

Read more on pg 3...

The module also provides information of where other object types that match the one being stored have been placed to potentially facilitate the grouping of like objects.

When a user needs to remove an object from the storage unit, the software can be configured to indicate from where inside the unit to pull the object. The software can suggest the location based on a First in/First out or a Last in/Last out methodology. This keeps users from repetitively pulling the latest products out of storage while products with a shelf life that is approaching expiration sit further back on a shelf. This should greatly enhance the reduction of waste through expired reagents, chemicals, etc.

The module can also be used to ensure that the longest stored tissue blocks are pulled out of the refrigerator first and can be used to hold histology employees accountable if they are in the habit of “cherry picking” easier cases rather than the ones that have been available the longest.

As the year progresses, additional functionality will be introduced that builds on this module and extends it further to provide additional functionality to the laboratory.

Completed Updates: Check out the latest features added to Assist Tracking

- **Admin Web Site** - Created a report to show the elapsed time from order placed in the doctor module until the status is closed so that elapsed time can be tracked/displayed.
- **Customer Service Module** - Added the call tracking record to the transaction log so that a full record for an accession is in there if one was specified. This also provides a placeholder that will show on other volume reports.
- **Scanner Engine** – Added logic to tie pulling the slide recipe into the print queue based on the embedding scan. Previously, this worked in a more subtle manner that did not always override correctly.
- **Assist Backup** – Modified the Assist backup routine to write records to a system log table so that the administrators can see if backups are running successfully or not. This table will begin to hold system related messages going forward for other utility functions. It records the date/time that the backup started and the date/time that it finished and indicates if the job completed successfully or not.
- **Assist Backup** – Modified the Assist backup routine to provide the capability of copying the completed SQL .bak file to a different location from where the backup originally stores the data. This provides the ability to perform backups locally and then copy the backups to a network store. This is useful for several difference scenarios such as multi location deployments.
- **Create a SystemTaskLog report/inquiry** to allow for the display of system related tasks and the status of their completion. This would be relevant for items such as checking to ensure that system backups are completing successfully.
- **Admin Web Site – Timer Countdown Maintenance** – Added selection criteria of: Active Flag, From Date, and To Date. This was done to make the retrieval of information more manageable. Defaulted the active flag to “Y”.
- **Admin Web Site – Label Print Hide Menu Maintenance** – Modified the load of the menu listing to be in alphabetical order by menu name to make it simpler to find a menu to hide/display.
- **Distribution** – Added the “*” button to toggle between configurations. Previously, this was only available via a switch bar code.

- **Distribution** – Added the stored comment logic to the screen to allow for the selection of a stored comment type to propagate the comments from the database to cut down on typing.
- **Distribution** – Added configuration color logic to turn the user name and user label to the color of the configuration that was specified in the configuration type maintenance to help end users in making sure that they are utilizing the configuration that they intend to use.
- **Distribution** – Modified the manifest printer logic. Defaulting the printer drop down to the end user Windows default printer now.
- **Scanner Module** – Modified the “void” object logic. Added an informational message to the scan history when a void is performed. Also extended the fields in the purge log table to include all fields. Provided the ability to turn on/off confirmation prompts on a void.
- **Accessioning Module** – Modified this screen for sites that are using the “instructions” free form entry field for a patient name. Provided the ability to map this data into the LIS Interface table so that it can be used in other modules “downstream” in the workflow to display the information without having to actually use the LIS Interface module.
- **Scanner Module** – Modified the scanner module to look in the LIS Interface table if instructions have been written there and the records could not be identified in the print queue. This works in conjunction with the change to accessioning outlined above and is only relevant for sites that are putting patient information into the accessioning instructions field.
- **Distribution Module** – Resolved issue where on the manifest, if a list of slides exactly took up one page, the totals would not print at the top of the second page. They would get left off the report altogether.
- **Admin Web Site – Object Type Maintenance** – Added maintenance for the StorageObject field. This check box will allow object types to be marked to activate them for the new storage tracking module of Assist.
- **Admin Web Site – Equipment Type Maintenance** – Added maintenance for the StorageEquipment field. This check box will allow equipment types to be marked to activate them for the new storage tracking module of Assist.
- **Order Closeout** – Fixed bug on the extended entry screen. The bug caused the person logged into the module to be reflected as the doctor placing the order even when the doctor was correctly specified on the screen.
- **Order Closeout** – Added suppress flags to the configuration for the print log. The Reference Lab, Patient, and Grossed By columns can now be suppressed. Also added logic to default the printer in the drop down box to the default Windows printer. Also added logic to truncate the order type description to fit in the printed column if it is longer than 20 characters so that it does not overwrite the next column.
- **Admin Web Site - Admin** – Added “about box” information to the web site for ease of support to provide version information for the actual web site.

Future Updates: Check out the new features coming soon

There are many significant changes and enhancements to the various Assist modules currently underway. Some of the featured modifications currently in progress include the following:

- **Badge-less Assist** – A new enhanced “main” scanner screen is under development. While a large change, this feature will provide more functionality and remove the need for a badge. Buttons are to be placed in a ribbon at the bottom of the screen to provide all of the functionality previously performed by badges.

- **Chemical Storage Tracking** – Additional functionality is being added to allow for the tracking and specification of detailed information regarding the chemicals that are stored in the laboratory. To begin with, this will show what chemicals are resident in the facility, but will be expanded over the coming months to include the tracking of inventory levels, MSDS paperwork, etc.
- **Preventative Maintenance** – The preventative maintenance module will be extended in the future to handle additional needs of laboratories.



If you have any questions or would like to schedule upgrades, please contact your Assist Tracking support team at Support@AssistTracking.com.

As always, please submit any questions or comments to the above mailbox and we will address your items as quickly as possible.