

ASSIST TRACKING®



Assist Tracking
Newsletter
October 2013

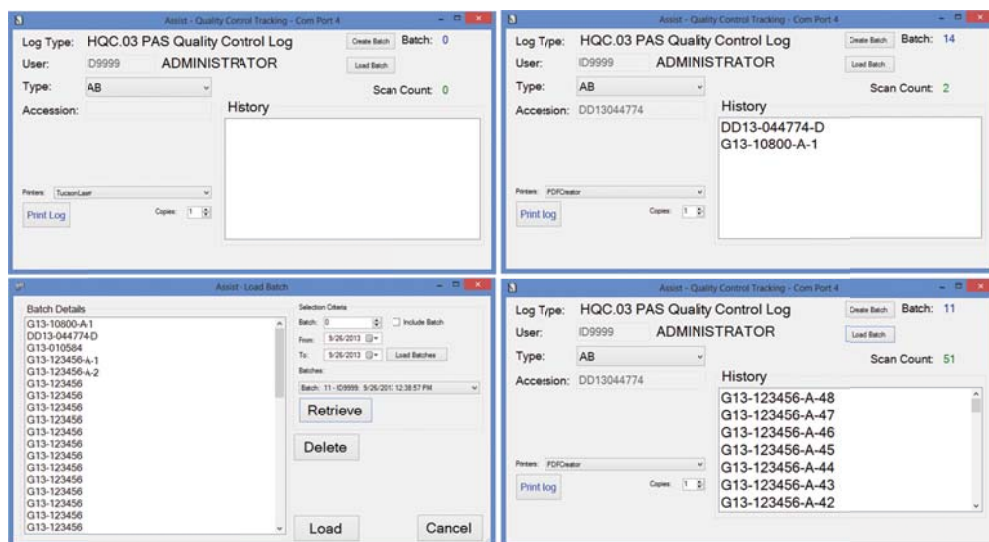
WHY GAMBLE WITH PATIENT SAFETY?

Featured New Item: Quality Control Tracking Scan/Batches

Assist has now been expanded to allow for the creation of scanning “batches” at any data collection point from the main scan engine.

There are two immediate applications for this new functionality and they will be outlined below.

1. The first application handles the situation where specimens are grossed at an offsite facility.
2. The second application of specimen batches is for the tracking of slide/control batches.



The first application handles the situation where specimens are grossed at an offsite facility. As the grossing module of Assist is launched, a “batch” is created. The batch process can be set to be triggered by the scan of any field number on the screen. In the case of “traditional” grossing, this would be the scan of the cassette, so the configuration for grossing can be set to trigger on a cassette scan. As each cassette is scanned, a record is added to the gross batch. The batch will stay active until the grosser logs out of the application or uses a button to activate a new batch.

Continued...

Completed Updates

Quality Control Tracking Scan/Batches

Warehouse Module Updates

Read more on pg. 2...

Future Updates

Native Slide Print Routine

Badge Print Routine

Customer Service Phone Switch Interaction

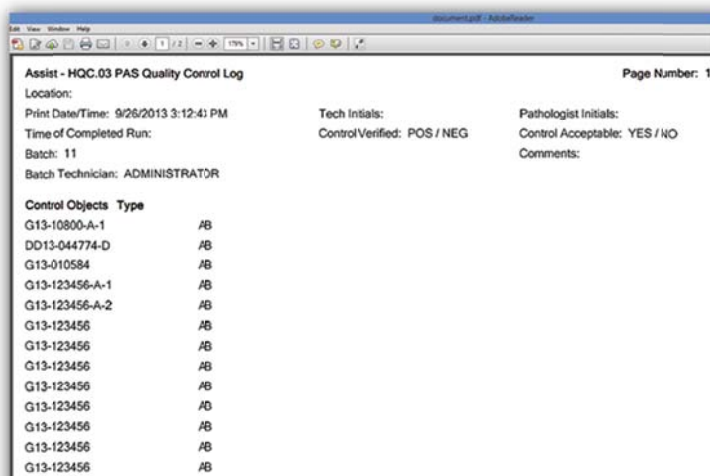
Read more on pg 6...

Featured New Item: Quality Control Tracking Scan/Batches (continued)

At distribution, the grossing batch can then be retrieved into the software with a simple click of the “load batch” button. This button shows the distribution load batch screen and grossing batches can be selected. Once all of the batches are specified, the distribution records are immediately created and a manifest can be printed for the courier to take along with the objects to go to the lab.

The second application of specimen batches is for the tracking of slide/control batches. A typical deployment would be to turn the feature on during Microtomy. As each slide is scanned, it is added to the batch. This operates identically to the grossing batch capture scenario outlined above. If both grossing and slide batch functionality is being used in a single lab, there is a batch type to allow the batches to be kept segregated.

In the new quality control tracking module, the slide batch can then be retrieved. This screen allows for a batch of slides to be associated with a specific stain and can also have a control slide associated with each record in the slide batch. A control log can be printed at the end of the processing. If more slides need to be associated with the stain and/or control slide, the module handles ad hoc scanning in addition to the batch that was created.



Control Objects	Type
G13-10800-A-1	AB
DD13-044774-D	AB
G13-010584	AB
G13-123456-A-1	AB
G13-123456-A-2	AB
G13-123456	AB
G13-123456	AB
G13-123456	AB
G13-123456	AB
G13-123456	AB
G13-123456	AB
G13-123456	AB
G13-123456	AB
G13-123456	AB
G13-123456	AB

The quality control logs can also be printed retroactively from the administrative web site and batches can be maintained if manager overrides need to be performed. This greatly assists in the record keeping that needs to be performed in laboratories of stains, dates, and control slide usage.

Completed Updates: Check out the latest features added to Assist Tracking

- **Web Site – Courier Stop Maintenance** – Created this screen to work with the call tracking software and allow for the creation of courier stop requests and maintenance of courier stop requests that were entered using the courier stop request feature of the call tracking software.
- **Web Site –Storage Cabinet Maintenance** – Modified this maintenance screen to include the “number of drawers” field to specify the capacity of cabinets. Also modified the storage drawer maintenance to include the number of rows and row capacity fields. These items will be used to support warehouse templates, which are coming.
- **Warehouse Module** – Modified the cabinet/warehouse location maintenance screen to show the list of cabinets assigned to a warehouse location as they are moved/maintained. Whether this is shown or not is driven by a flag in the configuration.
- **Warehouse Module** – Modified the cabinet/drawer maintenance screen to show the list of drawers assigned to a cabinet as they are moved/maintained. This is driven by a flag in the configuration. Also modified to enforce the number of drawers capacity value which was added previously. This is also enforced based on whether or not a flag

is set. It will also show the drawers that are assigned to the cabinet and this list will change as drawers are maintained.

- **Warehouse Module** – Modified the main object filing screen. Moved the comments up and made a smaller font. Also added the drawer capacity logic to stop from specifying too many rows and also too many positions inside a row if a flag is set. There is an override checkbox for these values that can be displayed on the screen to allow for an ad hoc override of the capacities if necessary.
- **Warehouse Module** – Created the concept of templates. Templates allow for the creation of entire cabinet and drawer structures along with the printing of the appropriate labels. This allows for greatly streamlined warehouse management.
- **Warehouse Module** – Added all of the label print options inside the main warehouse application. Provided the ability to suppress this with a configuration flag. This allows for warehouse module users to not need both screens (i.e. warehouse and label print) to operate fully.
- **Web Site – Warehouse Template Maintenance** – Created this screen to allow for the creation and modification of the warehouse templates.
- **Archival Routine** – Extended this module to include the TimerCountdown table.
- **Queue Viewer Module** – Provided a configuration flag that lets the queue limit itself when no printer is specified to only pull objects from the same default printer type. This helps when cytology has a cassette printer that is different from histology.
- **Web Site – Comment Maintenance** - Created this screen to view comments that were created with the call tracking software.
- **Web Site – Quality Control Information Report** - Created this report to show the information captured by the quality control module that was recently created.
- **Main Scanner Engine** – Modified the main scanner engine to be able to capture data into a scanned batch detail/header table as items are scanned. This handles the situation where a block might be grossed off site at a remote hospital. This will batch them together (showing the batch number on the screen) and make them available to the distribution module so that manifests can be printed and the distribution of the cassettes back to the lab can be tracked.
- **Distribution Module** – Modified so that it can load grossing batches and pull them into the module using a batch load screen that is launched by a button that can be turned on based on the configuration of the software.
- **Distribution Module** – Modified the “Refresh Statistics” button functionality to only count distribution records with a slide number as a slide scan. Previously, blocks and slides were both getting counted as “slide statistics” if the button was pressed and both had been done.

- **Web Site – Object Type Maintenance** – Modified this screen to include the cassette, bottle, slide, requisition flags. This is used in several places inside Assist to determine what physical type of object is associated with the logical object type instead of hardcoding the words cassette, slide, etc.
- **Label Print** – Modified the multiple format bottle label print routine to support cytology labels. These changes allow for field names to change based on whether or not cytology is indicated. Also allows for the printing of multiple labels for test tubes.
- **Thermo Point of Use** – Modified to allow for the specification of patient names when printing slides. These can be mapped onto a slide (for cytology).
- **Main Scanner Engine** – For grossing add on cassettes, added from/to logic that based on whether numeric or alpha cassette identifiers, provides the grosser with a drop down of letters or a number rocker box in a from/to pattern. When the grosser specifies the from/to combination along with indicating to use this feature (checkbox on screen) then the print queue is filled with records across the range.
- **Web Site – Distribution Report** – Modified this report to include cassette numbers for block distribution. Previously, only requisitions and slides were shown.
- **Web Site – Employee Scan Log Report** – Fixed this report to allow for pieces that are non-numeric. Previously, if non-numeric values were captured, the report would default to “1” for all of them and not operate correctly.
- **Distribution Module** – Modified the distribution module to allow, based on configuration flag, to have the scan statistics refresh with each scan transaction rather than only on the press of the refresh button. There are flags for Requisition, Slide, and Cassette so that statistics can be automatically refreshed on some objects but not all. This was originally moved to a button press to make the software operate quicker but was added back for sites that feel the auto-update is worth the loss of speed.
- **Web Site – Business Area Maintenance** – Created this new maintenance screen to allow for the creation of “business areas”. This will be used to support the concept of different lines of business within the laboratory (i.e. Cytology vs Histology). This would be the creation of the placeholder along with the cytology and histology flag to indicate which human readable description is which line of business.
- **Web Site – Accession Prefix Maintenance** – Added the business area drop down to allow business areas to be tied to accession prefixes. This will allow for branching in different portions of the software.
- **Web Site – Accession Prefix Maintenance** – Removed the “filter flag” field from the screen and replaced it with a “Use Location Identifier” check box. Too many times, this open field was getting left blank when an “N” needed to be there. This checkbox now forces a value into the field (either “N” or “P”) which will cut down on unintended software operations.
- **Distribution Module** – Modified to allow the business area filter and number wheel category filter to be applied to accession prefixes based on the matching value in the configuration (for manual entry screen).

- **Web Site – Accession Prefix Maintenance** – Added the number wheel category drop down to the allow categories to be tied to accession prefixes. This will allow for branching/filtering in different areas of the software.
- **Main Scanner Engine** - Modified to allow the business area filter and number wheel category filter to be applied to accession prefixes based on the matching value in the configuration (for manual entry screen).
- **Check In/Out Module** - Modified to allow the business area filter and number wheel category filter to be applied to accession prefixes based on the matching value in the configuration (for manual entry screen).
- **Label Print Module** - Modified to allow the business area filter and number wheel category filter to be applied to accession prefixes based on the matching value in the configuration (for manual entry screen).
- **Distribution Module** – Modified to show QC notes if any have been captured previously during the lab processes. The QC pop up screen will also be displayed if any of the notes are pop up enabled and will allow the technician to rotate through multiple messages if they exist.
- **Web Site – Number Wheel Category Maintenance** – Created this maintenance screen to allow for the creation and maintenance of the number wheel categories. These are used to categorize accession prefixes as internal vs. professional component prefixes to allow the software to branch appropriately.
- **Web Site – Scanned Batch Type Maintenance** – Created this screen to allow for the creation and maintenance of scanned batch types. These are used as part of the “batch” creation process that can be done from the main scanner engine. The most common example would be distribution batches that are created as cassettes are filled by the grossing module at a remote hospital. The grossed batch can then be loaded and be sent out automated with a manifest from the distribution module.
- **Web Site – Scanned Batch Maintenance** – Created this screen to allow for the creation and maintenance of scanned batch detail records. This data is normally created by the scanner engine and this screen allows the batch details records to be tweaked without having to go into the scanner engine to perform scan transactions.
- **Main Scanner Engine - Microtomy** – Allow the scanning of a control slide. This scanned control slide would then be associated with every slide scanned in that session unless the control slide is changed.
- **Web Site** – Created a report/inquiry to pull the control slide information.
- **Web Site – Error Message Listing** – Created a report that lists all of the Error messages in the Assist database that can be used for quality control.
- **Web Site – Checklist Type Maintenance** – Created this screen to allow for the creation and maintenance of checklist type records. This data is used to segment checklist items so that they can be filtered appropriately on screens inside Assist where checklists are displayed.

- **Web Site – Checklist Item Maintenance** – Created this screen to allow for the creation and maintenance of checklist item records. This data is used to segment checklist items so that they can create the checklist items that will be used by maintenance.

Future Updates: Check out the new features coming soon

There are many significant changes and enhancements to the various Assist modules currently underway. Some of the featured modifications currently in progress include the following:

- **Native Slide Print Routine** – A new version of the slide print routine is being created that provides “stand alone” bar code printing.
- **Badge Print Routine** – Badge printing will move to the web site for better control of the badge printing routine and to provide additional ease of use.
- **Customer Service Phone Switch Interaction** – Modifications to the customer service/call tracking module to react to phone calls coming into a customer service representative phone. This allows for “screen pop” of the customer that is calling as the phone call is received.



If you have any questions or would like to schedule upgrades, please contact your Assist Tracking support team at Support@AssistTracking.com.

As always, please submit any questions or comments to the above mailbox and we will address your items as quickly as possible.